

1 Driver Installation procedure

1. Download the Cisco_usbconsole_driver_3_1.zip file and unzip it.
2. Double click setup(32).exe, and follow the steps as shown on following sections.

1.1 Install / Uninstall Cisco USB console serial drive on WinXP

1.1.1 Install

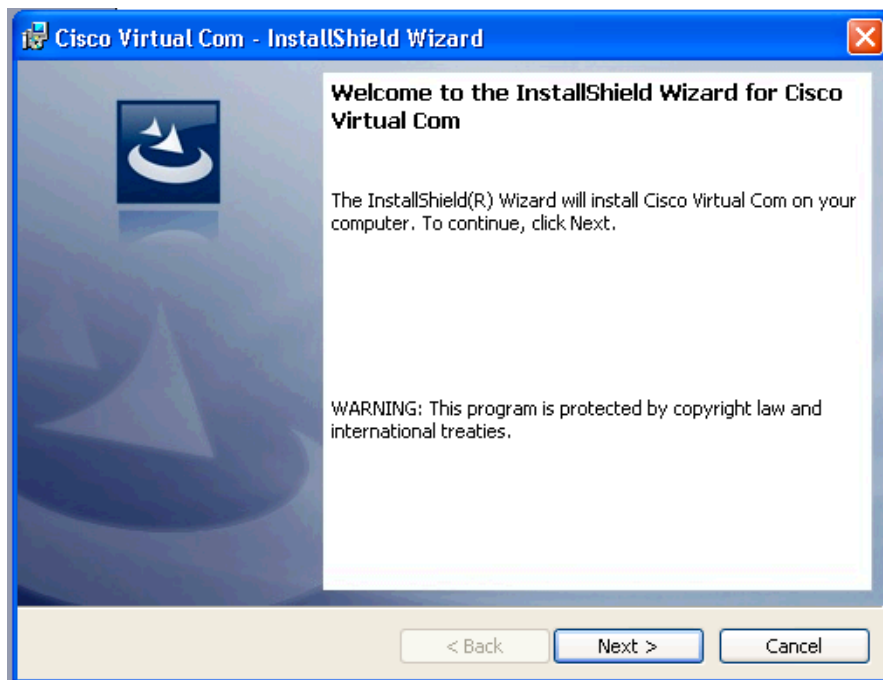


Figure 1.1.1

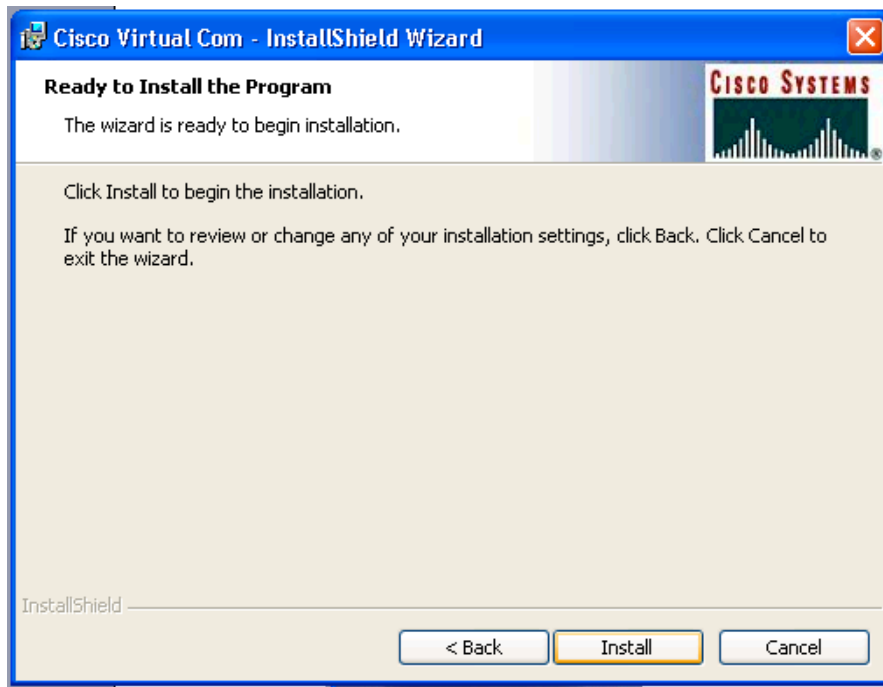


Figure 1.1.2

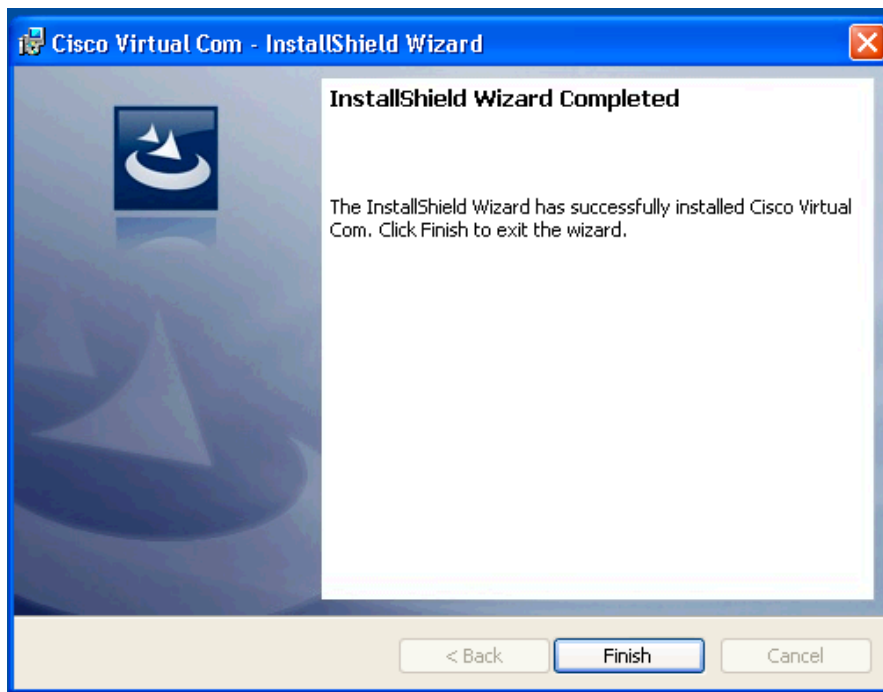


Figure 1.1.3

Attach the device: Connect the USB Console Cable from router to the USB port of the PC.

Windows will lookup the driver **automatically** to install for the device attached.

1.1.2 Remove / Uninstall the driver.

Go to “Add or Remove Programs” (Figure 1.1.4) or setup(32).exe (Figure 1.1.5) for driver un-installation with or without device attached. Note that if the COM port is still open by Windows ‘s hyper-terminal program, please CLOSE hyper-terminal during un-installation. Please follow the reminder to restart the computer for completion.

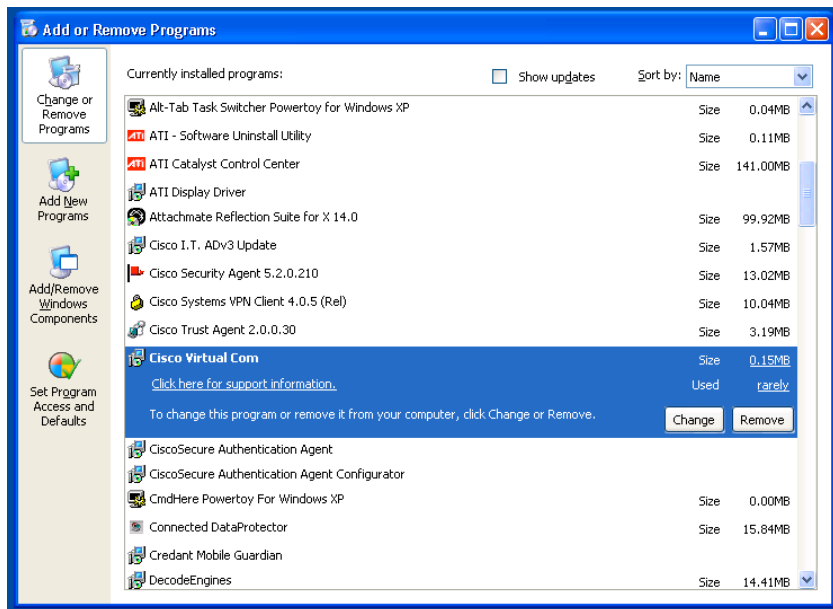


Figure 1.1.4

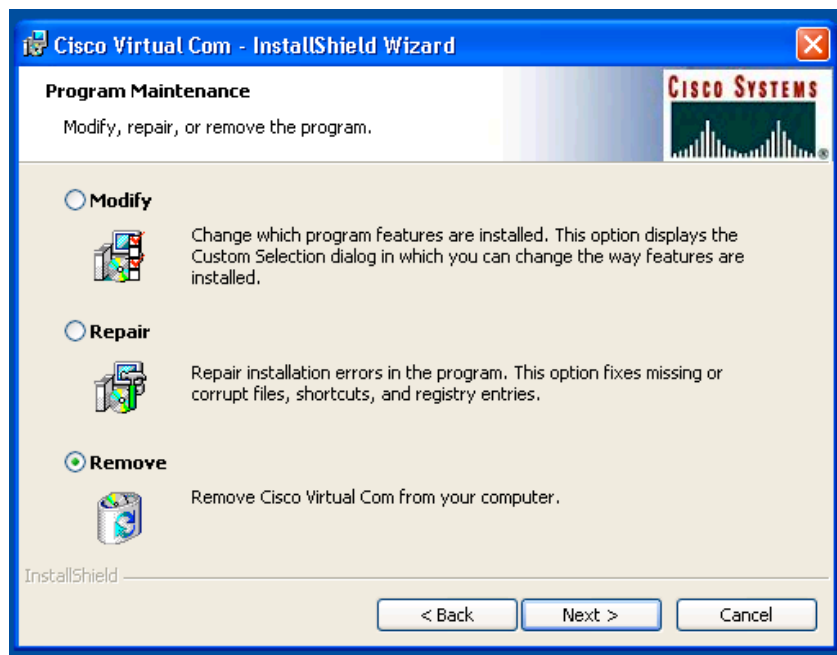


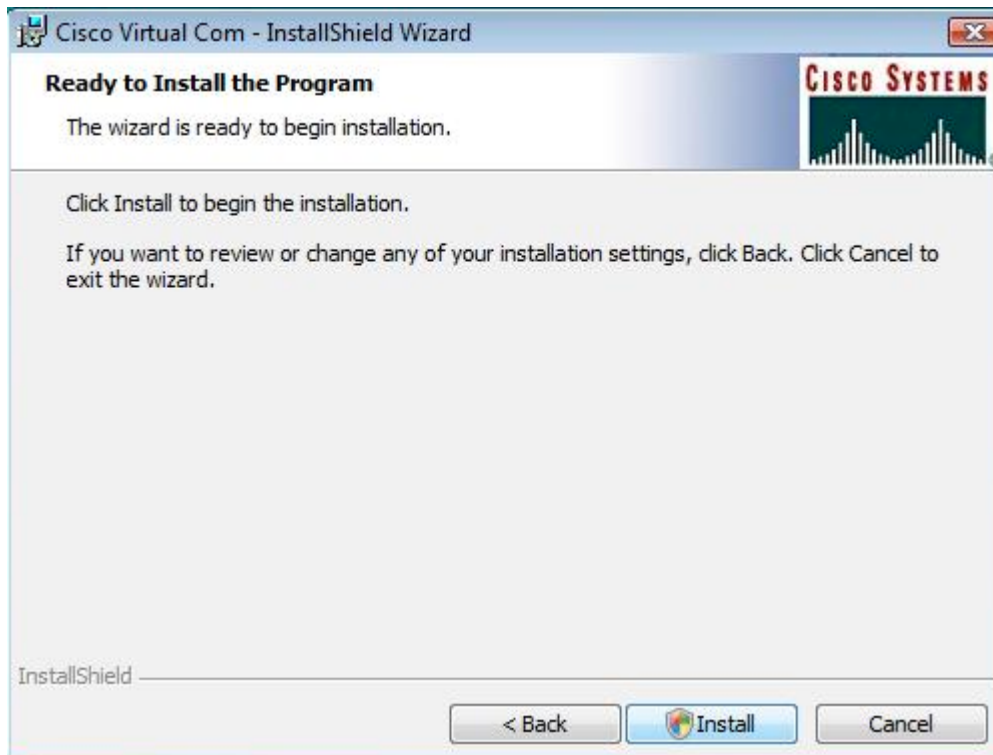
Figure 1.1.5

1.2 Install / Uninstall Cisco USB console serial drive on Windows Vista 32 bits.

1.2.1 Windows Vista 32bits installation

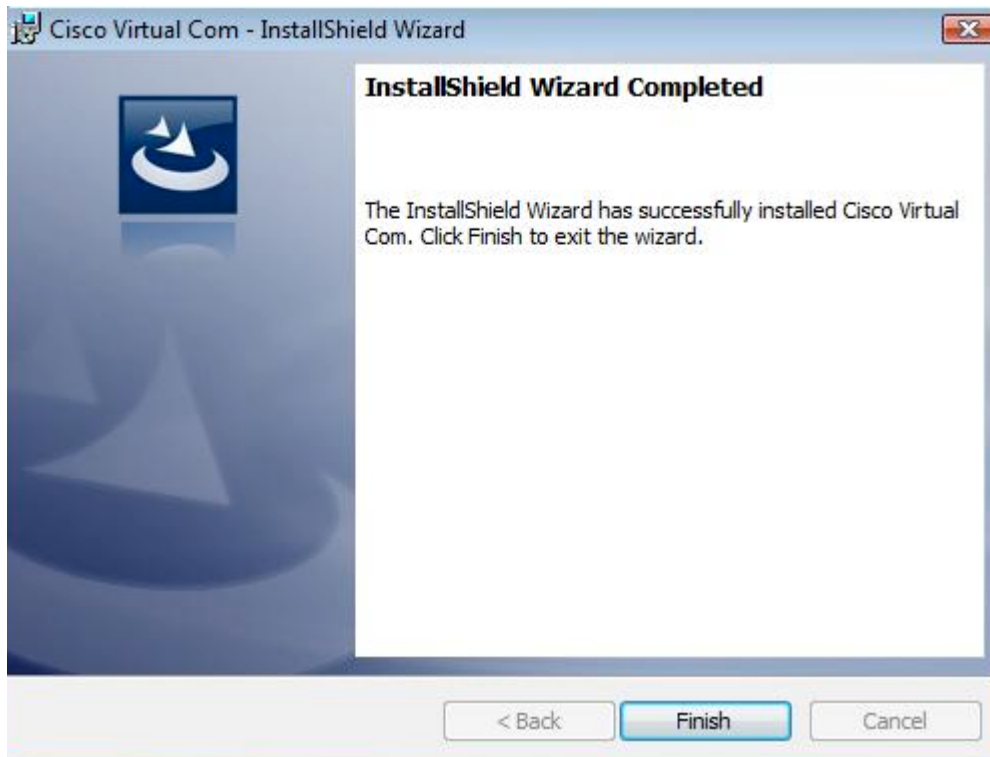
Run the setup(32).exe program

Click Next on the Dialog Box to proceed with installation program



A User Account Control could pop up asking user to proceed or cancel the program.

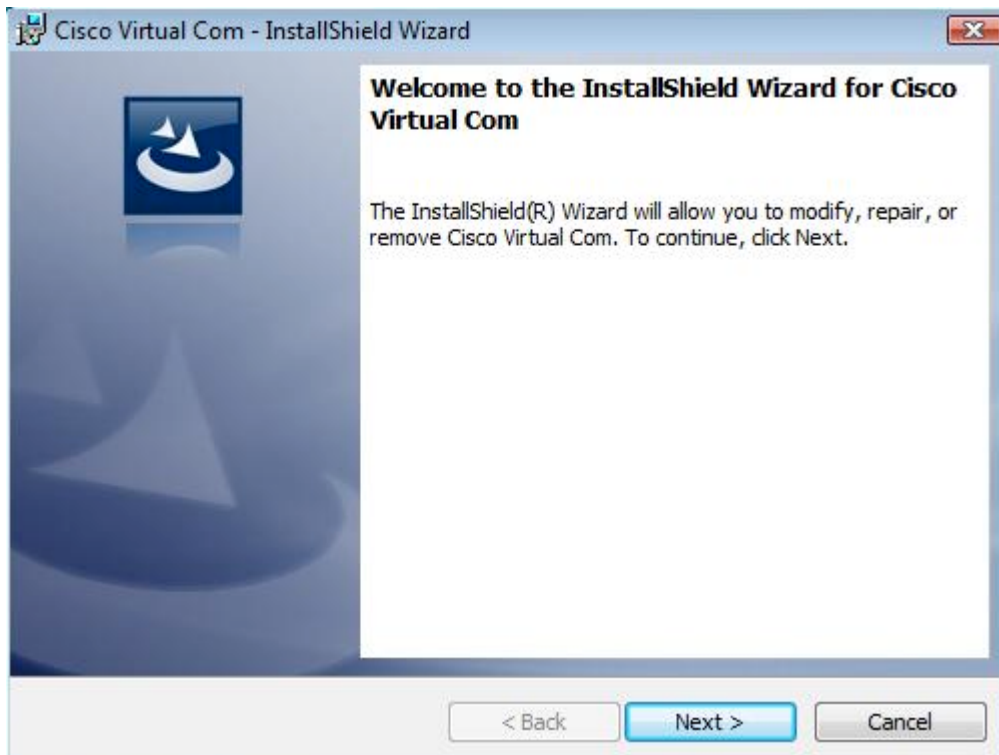
Click on “Allow – I trust this program. I know where it ‘s from or I ‘ve used it before” to proceed.

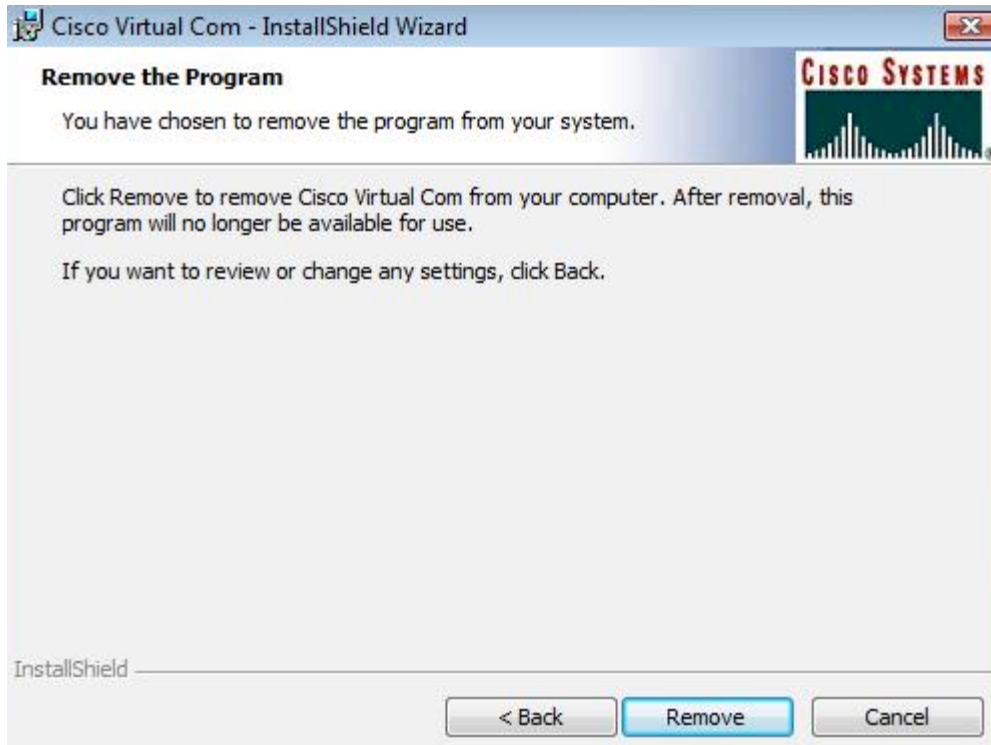


Attach the device: Connect the USB Console Cable from router to the USB port of the PC. An Info Messages Box will pop-up automatically on top of the Task Bar Panel. After the last of these Info Message Boxes disappeared, the usbconsole feature is ready to be used.

1.2.2 Windows Vista 32bits uninstallation

Run the setup(32).exe program
Click Next on the Dialog Box to proceed with installation program





A User Account Control could pop up asking user to proceed or cancel the program. Click on "Allow – I trust this program. I know where it 's from or I 've used it before" to proceed.

